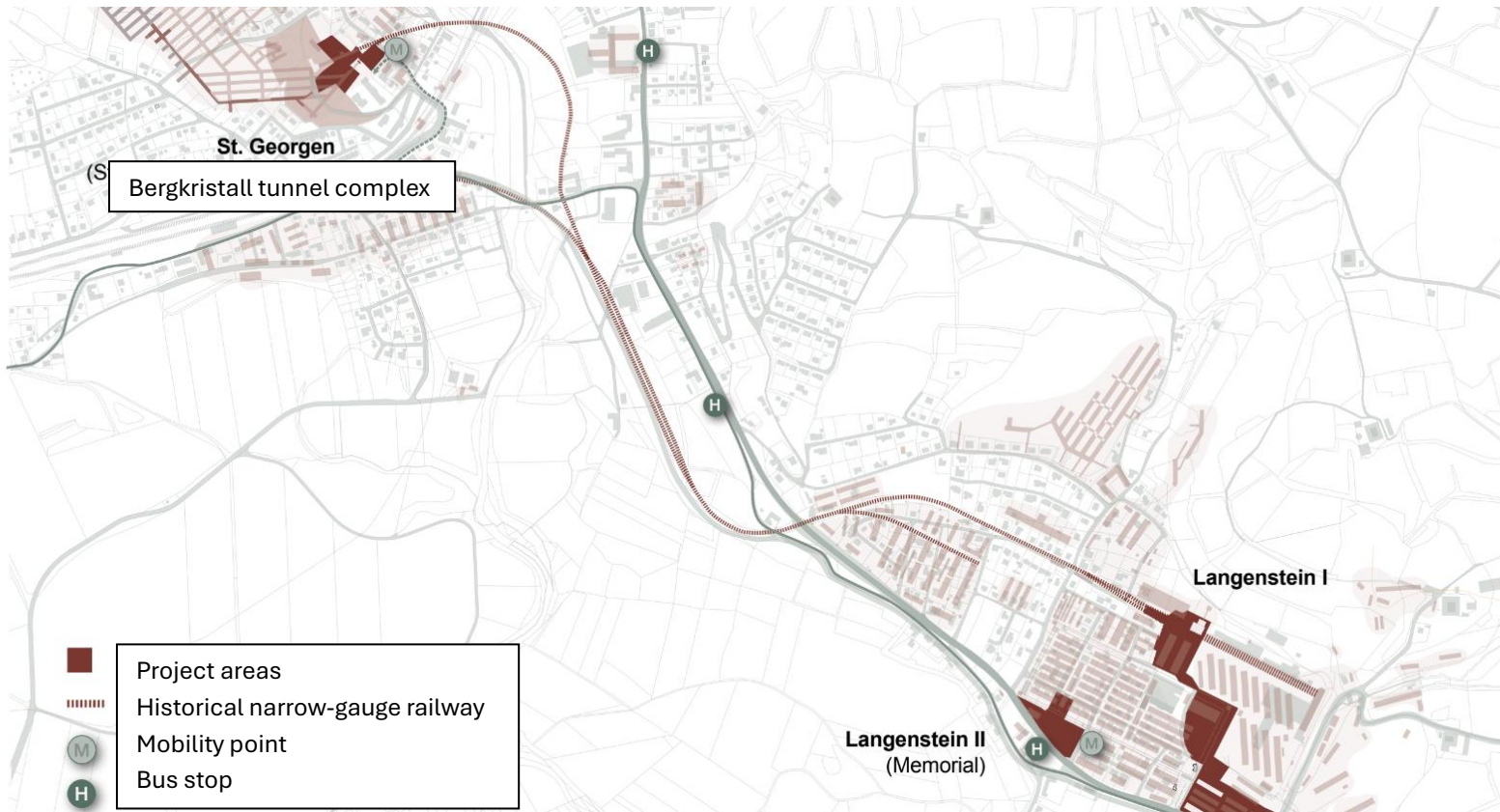


Redesign of the Gusen Memorial

Updates and Developments



Overview (as of April 2026)

- Current status of architectural and landscape planning
- Research projects
- Development of curation and education concepts
- Next steps and events

Project management:

MAUTHAUSEN 
MEMORIAL | KZ-GEDENKSTÄTTE

 Burghauptmannschaft
Österreich

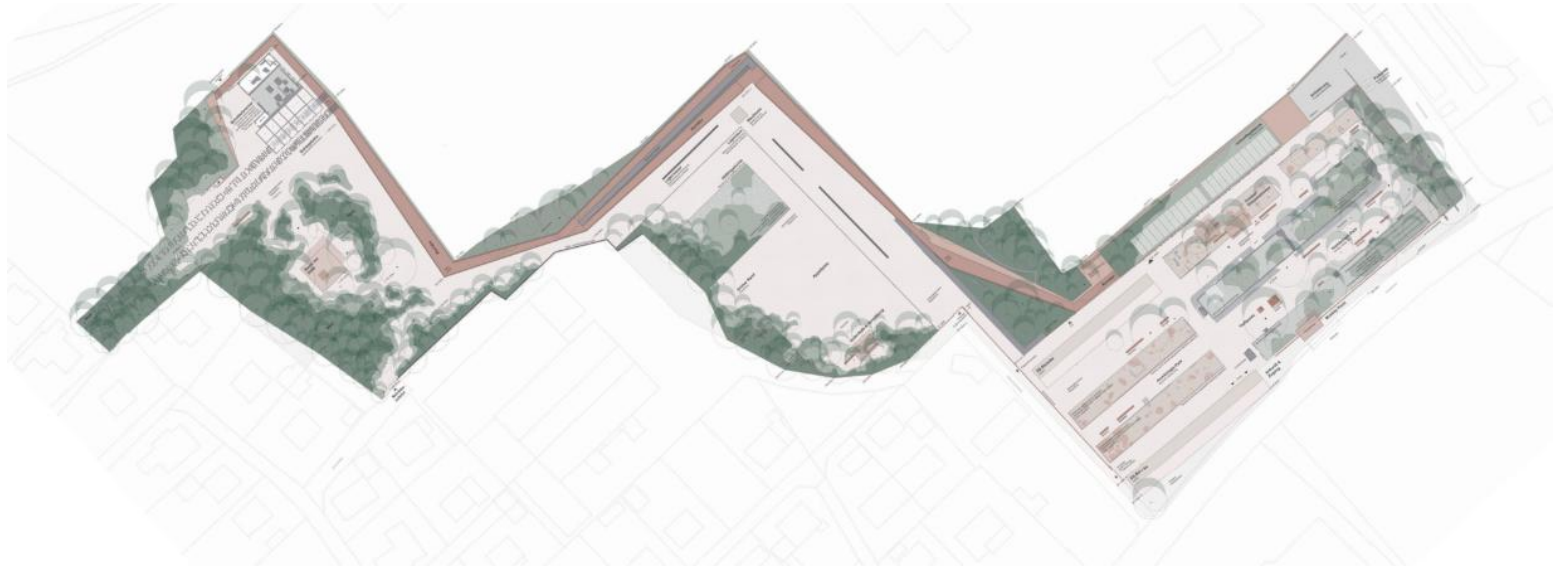
Design team:

querkraft

KIERAN
FRASER
LANDSCAPE
DESIGN

Langenstein I: Former SS building, roll call square, stone crusher

Pathways and Open Space Planning



Design of the arrival area (SS building, arrival building, archaeological park) and creation of recognisability through the choice of materials and a clear site identity

The arrival building is an elongated structure located along the northern edge of the forecourt. All exposed concrete surfaces are constructed using red-coloured concrete with vertical, rough-sawn formwork, which echoes the existing Memorial de Gusen with its horizontal, rough-sawn formwork on grey concrete surfaces. Using the same site identity in the arrival areas across all three sites creates recognisability as a unified memorial landscape.



Interior view and start of the tour

The circular path around the new memorial site at Langenstein I begins at the visitor centre. The entrance, located centrally on the forecourt, leads visitors into the building's arrival area. Immediately to the left of the entrance, visitors' attention is drawn to the pathway that begins inside the building and forms the guided section of the circular tour.



Access to the former roll call square, taking into account the exposed retaining wall

In light of new archaeological findings, the pathway on the north side of the roll call square has been redesigned. The pathway now runs in front of the historical retaining wall and provides barrier-free access for visitors up to the stone crusher.



Path around the stone crusher

The pathway has been extended in the preliminary design and now leads visitors right around the stone crusher, allowing it to be viewed from all sides.

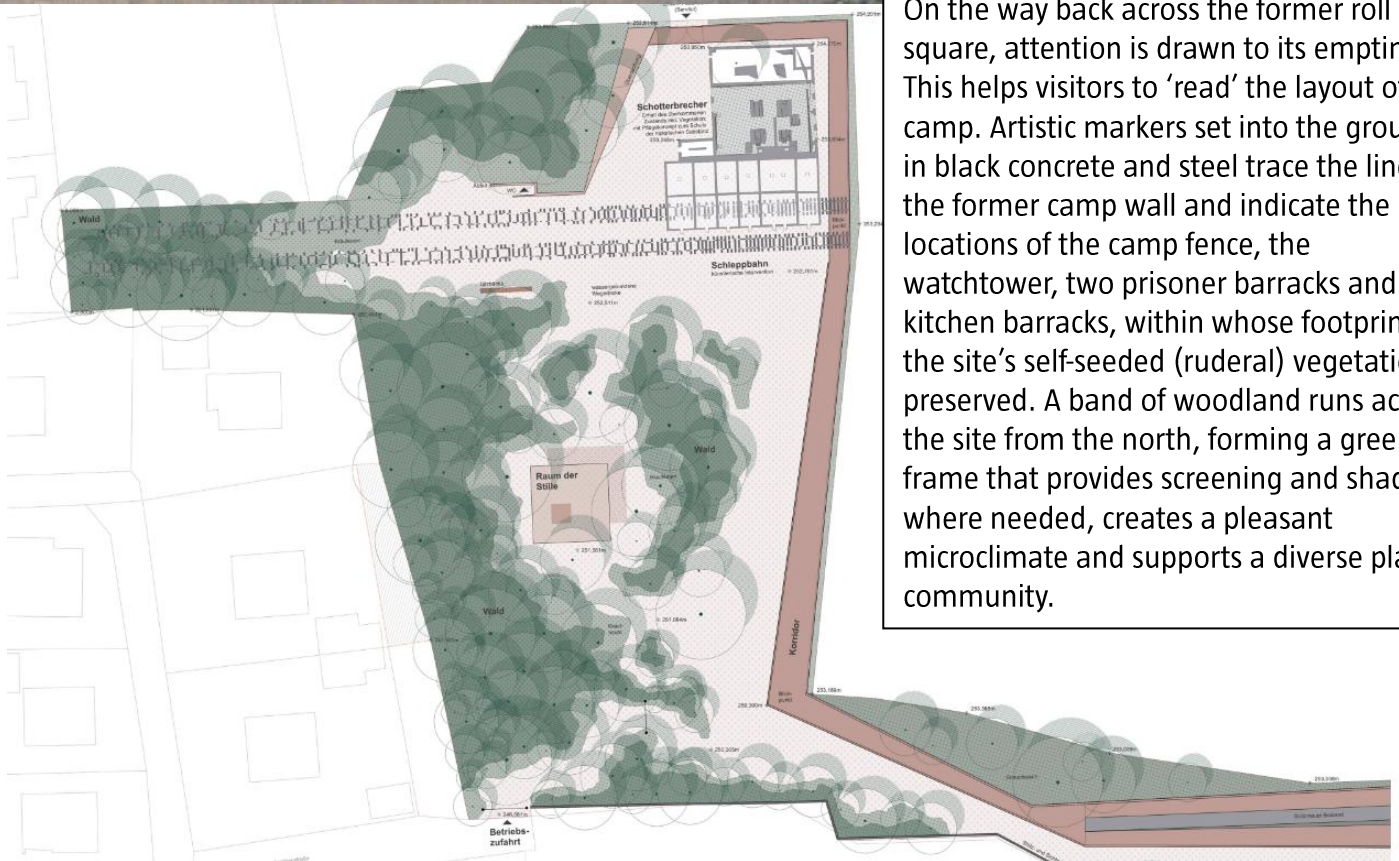
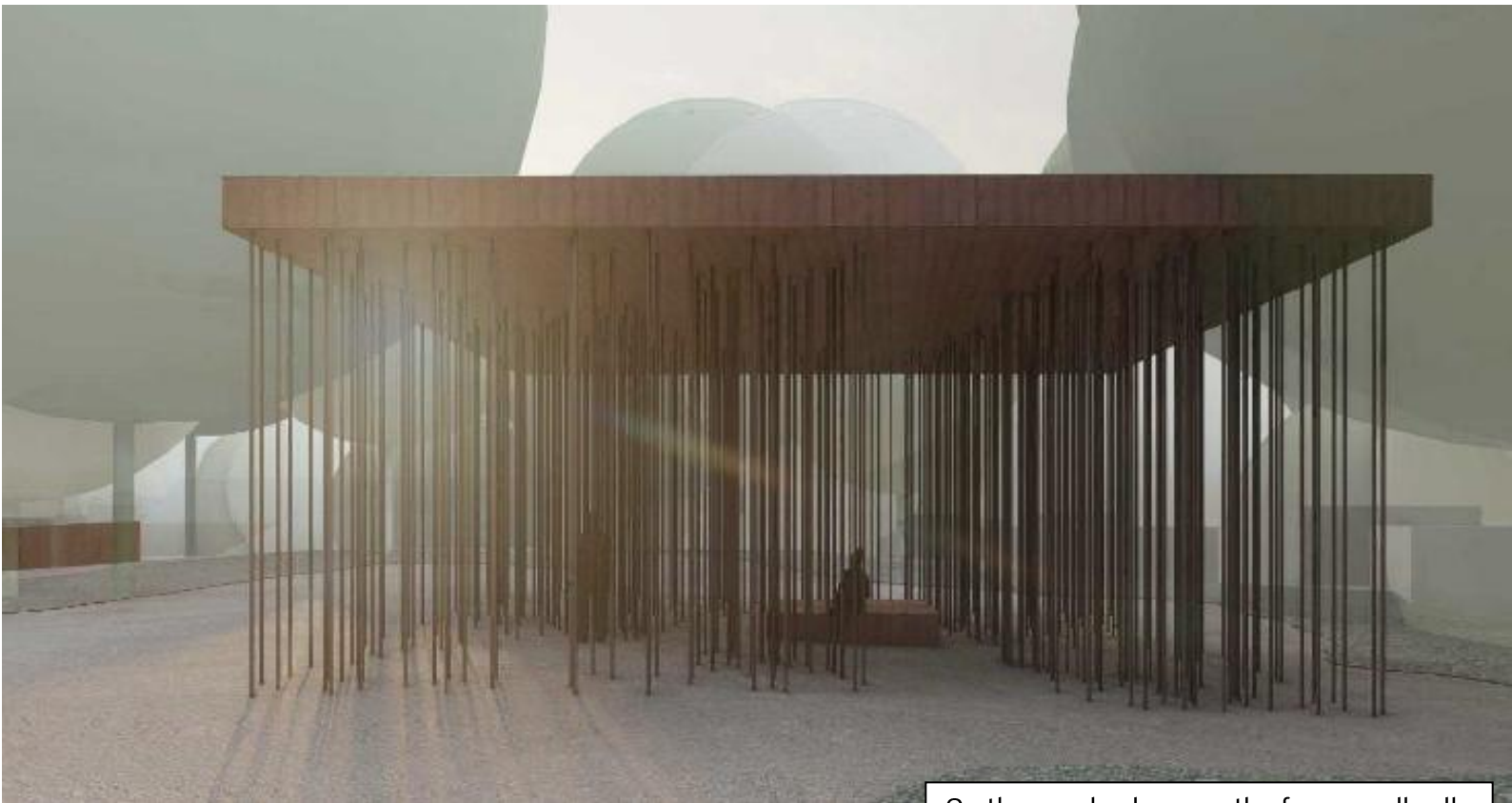
Here, a striking artistic installation recalls the route of the former narrow-gauge railway, the 'Schleppbahn'. Based on the original dimensions of the track bed (2.5 metres), two parallel tracks are laid flush into the ground as a 'buried sculpture', leaving only the surface of the three-dimensional elements visible.



'Room of Silence'

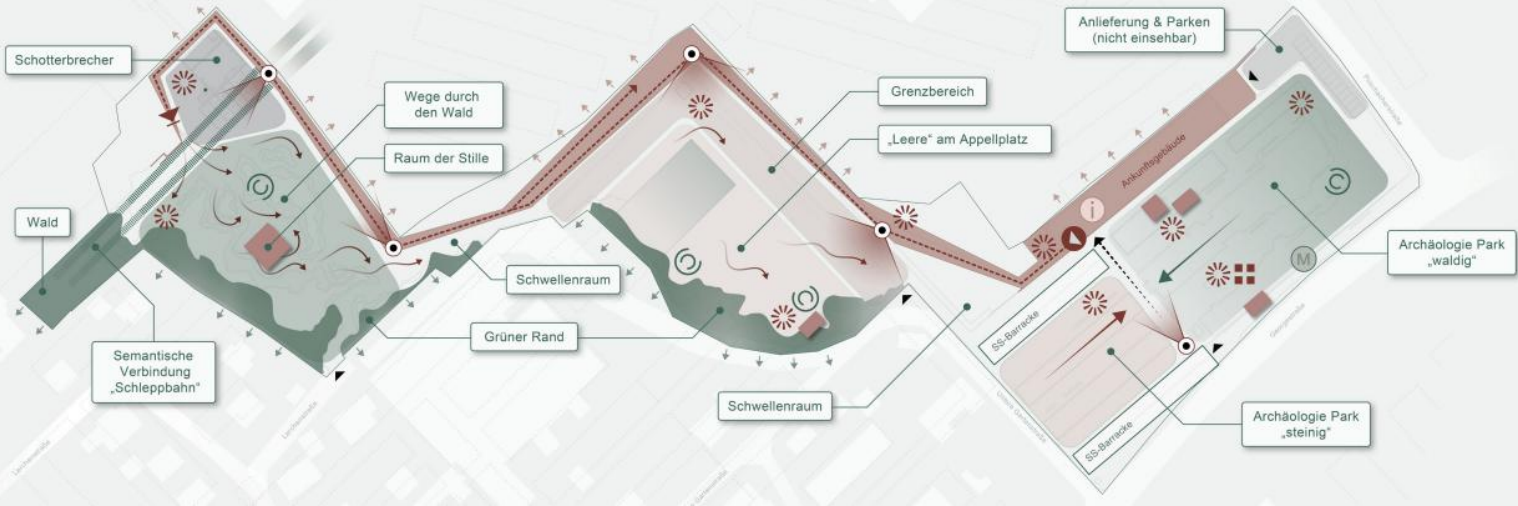
The 'Room of Silence' is intended as a permeable space surrounded by dense vegetation, which offers visitors a space of retreat for contemplation and reflection.

It consists of a reinforced concrete slab supported by approximately 400 reinforced bars with a diameter of 40 mm. The colour and formwork pattern are the same as those used for the arrival building and pathway.



On the way back across the former roll call square, attention is drawn to its emptiness. This helps visitors to 'read' the layout of the camp. Artistic markers set into the ground in black concrete and steel trace the line of the former camp wall and indicate the locations of the camp fence, the watchtower, two prisoner barracks and the kitchen barracks, within whose footprint the site's self-seeded (ruderal) vegetation is preserved. A band of woodland runs across the site from the north, forming a green frame that provides screening and shade where needed, creates a pleasant microclimate and supports a diverse plant community.

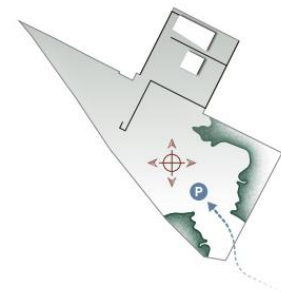
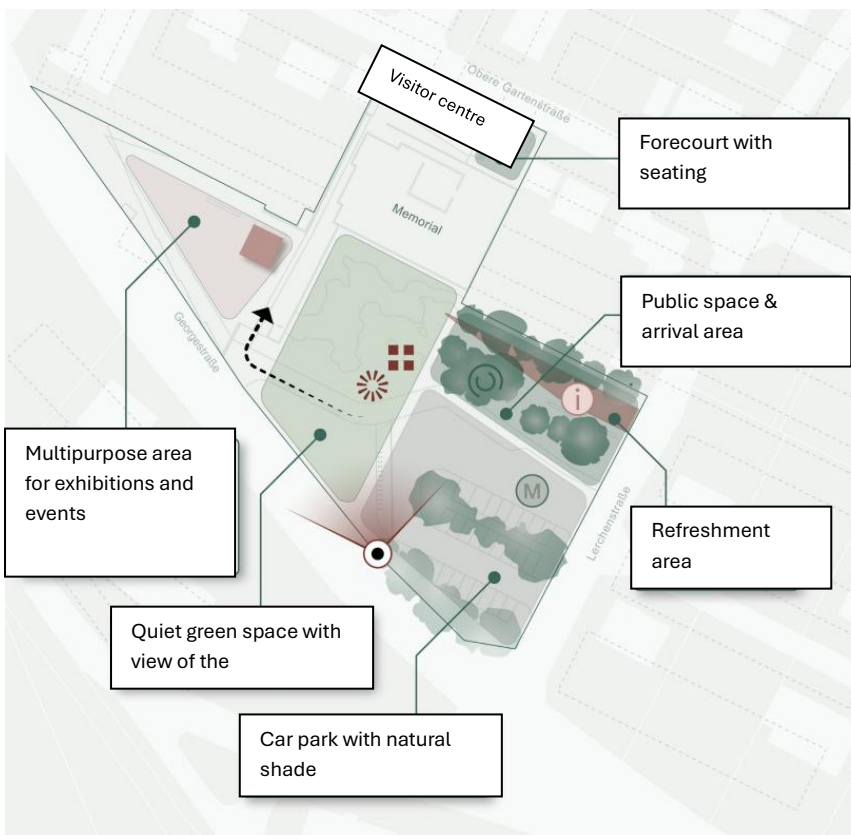
Design Concept and Spatial Programme



Langenstein II: Redesign of the forecourt at the Memorial de Gusen

The Memorial de Gusen is located on the site of the former crematorium barracks, which no longer stand today. The camp's crematorium oven is still preserved at the centre of the memorial.

An additional refreshment area with toilet facilities, as well as parking spaces for coaches and cars, is being created on the area south of the memorial. The aim is also to enhance the quality of the environment and amenities for local residents.



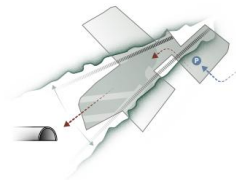
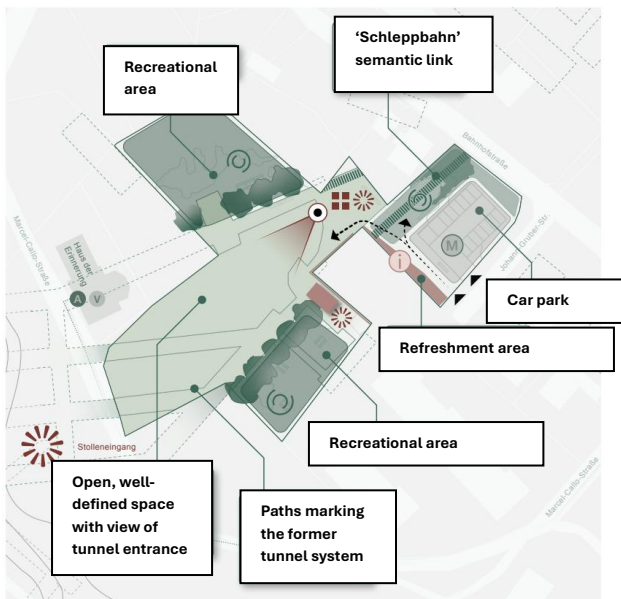
Kernidee:

Core concept: Arrival & orientation

- Zugänge und Zufahrten
- Entrances and access roads
- Mobility point
- Info point
- Interpretation point
- Physical model

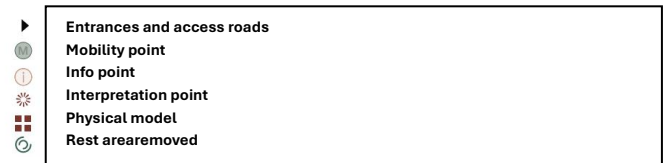
St. Georgen: Redesign of the area outside the 'Bergkristall' tunnel complex

This site is located at the entrance to the 'Bergkristall' underground tunnel complex, which was built by prisoners of the Gusen concentration camp. These tunnels originally extended into the area covered by the site. A further refreshment area, visitor car park and landscaped open spaces are being created here.



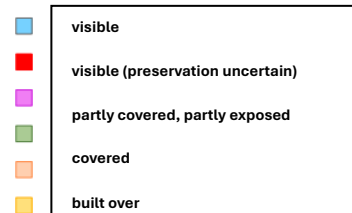
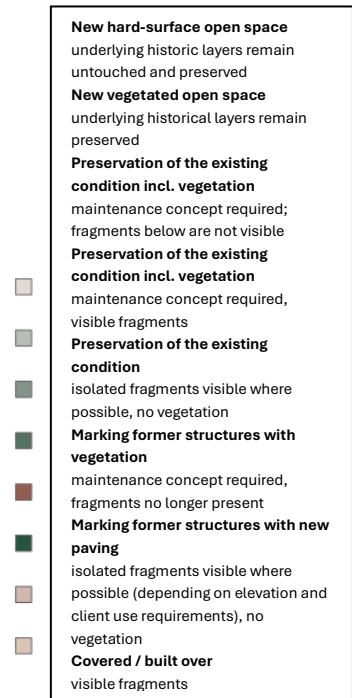
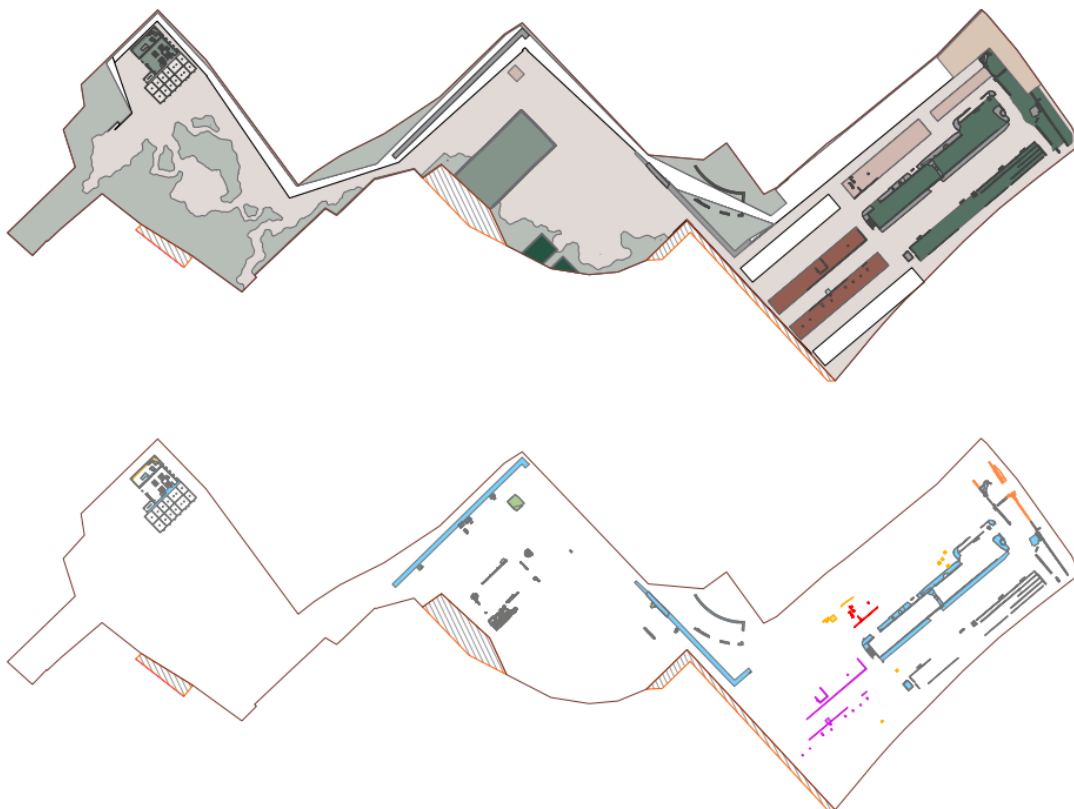
Core concept

- Show connections (e.g. narrow-gauge railway)
- Create spaces
- Establish visual connections
- Enhance amenities (including for local residents)



From the arrival area, visitors' attention is directed to the first open space, where the 'Schleppbahn' artistic installation based on the tracks of the narrow-gauge railway – which had previously 'disappeared' into the woods at Langenstein I – re-emerges from the dense greenery. A long bench invites visitors to linger. The pathway then narrows, after which visitors step out into an open space that widens and offers an impressive view towards the tunnel complex.

Archaeology and Design Methodology



Research Projects

- 'Multiple Perspectives on the Gusen Concentration Camp' – the experiences of different international prisoner groups (with contributions from victims' associations and nations)
- Visual sources on the Gusen concentration camp
- Prisoner community
- Perpetrators at the Gusen concentration camp
- The history of Gusen: Before and after

Development of Curation and Education Concepts

Framework Concept for Further Development of the Gusen Remembrance Site

Development of a distinct profile for the remembrance site, distinguishing it from and complementing the Mauthausen Memorial as a space for encounter and participation. Definition of the foundations for further content development, curatorial design and educational focus.

Curation

Aim: Development of curatorial interventions for indoor and outdoor areas and modular exhibition elements with a participatory character Modellierungen analog/digital

- Analogue/digital modelling
- Individual/personalised approaches to history using digital media
- Inclusion
- Camp history: genocide and forced labour
- Personal accounts from groups of prisoners
- Post-history: 'The struggle for memory'
- The history of Gusen: Before and after

Education concept

Content: Thematic focus areas (on the history of the camp and post-war history, contemporary discourses, ...) personale Vermittlung knüpft an „kuratorische Interventionen“ an und leitet davon Inhalte von Programmen ab

- Staff-led education formats build on 'curatorial interventions' and uses them to generate programme content
- Diverse methods: exchange, discussion, encounter, reflection, participation, ...
- Programmes (tailored to target groups): e.g. short tours for those with limited time ('cyclists'), in-depth programmes for longer stays (modular programme structure)
- Inclusion ('a memorial for everyone')
- Partnerships (extend existing educational partnerships to Gusen, e.g. Austrian Armed Forces, Austrian Security Academy (SIAK), the judiciary, etc.)

Next steps

Project – Architectural and Landscape Design:

- ✓ Completion of the negotiation process with the competition winner (autumn 2025)
- ✓ On-site presentation by the competition winner (contractor) (November 2025)
- Award of project management and site supervision from 2026
- Start of planning phases (preliminary design, design, etc.) from 2026 onwards
- Start of construction planned for mid-2027

Project – Content and curatorial design:

- ✓ Presentation of the Framework Concept for Further Development of the Gusen Remembrance Site (autumn 2025)
- From November 2025 onwards, development of concepts for:
 - Curatorial interventions (exhibitions, outdoor information system, digital applications)
 - Education programmes
 - uidelines for competitions (exhibition design) and further tendering procedures

Contact: info.gusen@mauthausen-memorial.org